

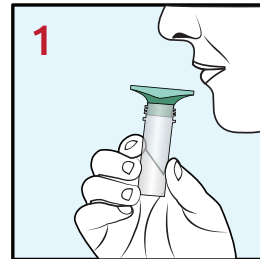
Saliva RNA Collection and Preservation Device Dx Donor Procedure



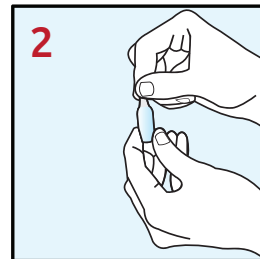
Note: Rinse your mouth with water and wait for 10 minutes before collection.

- 1** Spit into the **Collection Funnel** until the liquid saliva (not the bubbles) in the **Collection Tube** reaches 2 mL.

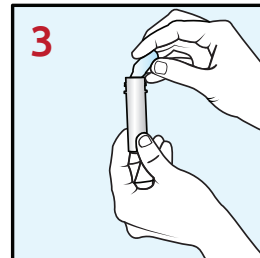
If you notice excess bubbles, eliminate them by gently tapping the tube on a hard surface. Discard or recycle the **Collection Funnel**.



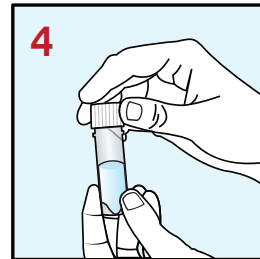
- 2** Twist and remove the tip of the **Preservative Ampoule**.



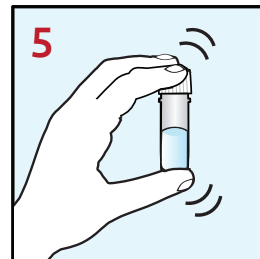
- 3** Squeeze the **Preservative Ampoule** to empty the entire contents into the **Collection Tube**.



- 4** Screw on the **Cap of the Collection Tube** to **close it tightly**.



- 5** Shake well (for 10 seconds) to mix.



The saliva sample is now preserved and ready for storage, shipping or processing.

Dispose of **Preservative Ampoule** and tip in the garbage. The device container can be recycled.